

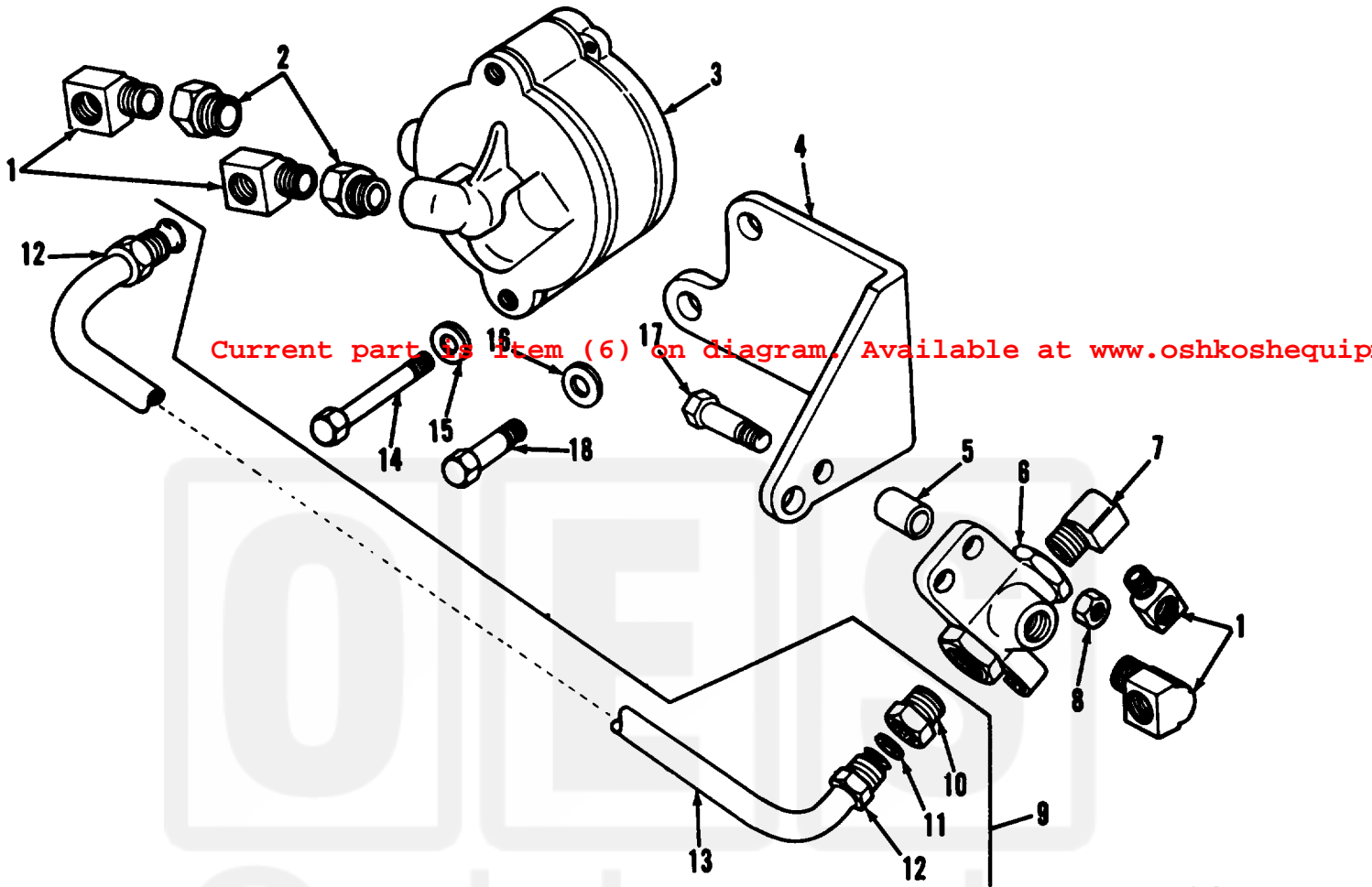
Current part is item (6) on diagram. Available at www.oshkoshequipment.com

TM9-2320-211-34P

(1) SMR Code	(2) Federal Stock Number	(3) DESCRIPTION	(4) UNIT of meas	(5) Qty inc. in Unit	(6) 30-day DS maint allowance	(7) 30-day GS maint allowance	(8) 1-yr alw per 100 equip cnt- gcy	(9) Depot maint alw per 100 equip	(10) Illustration No. (a) Figure No. (b) Item No.
Reference Number & Mfr. Code		Usable On Code	(a) (b) (c)			(a) (b) (c)			
2002-POWER CONTROL UNIT ASSEMBLY-CONTINUED									
P-H	2520-527-7984	SPRING HELICAL COMPRESSION:SHIFTER SHAFT LOCK BALL 5277984 (19207)	EA	2	*	*	*	*	6 10 271 58
X1		BALL: MS19059-96 (96906)		3					271 59
P-	2520-030-7262	SHAFT ASSEMBLY SHIFTER: A2843A105 (78500)	EA	1	*	*	*	*	4 8 271 60
P-	2520-770-3976	SPRING HELICAL COMPRESSION:SHIFTER SHAFT LOCK BALL 7703976 (19207)	EA	1	*	*	*	*	6 10 271 61
X1		COVER:OUTPUT SHAFT SHIFTER 7413949 (19207)		1					271 62
P-	2520-741-4253	GASKET:WINCH OUTPUT SHIFTER SHAFT COVER 7414253 (19207)	EA	1	*	*	*	*	10 40 271 63
P-F	4730-277-8274	ELBOW: 137423 (21450)	EA	4	*	*	*	*	6 10 272 1
X2-F		REDUCER:VALVE ASSEMBLY 444012 (21450)	EA	2	*	*	*	*	272 2
P-F	2590-040-2288	VALVE ASSEMBLY:WINCH GOVERNOR POWER DIVIDER 8327440 (19207)	EA	1	*	*	*	*	6 10 272 3
X2-F		BRACKET: 10900074 (19207)	EA	1	*	*	*	*	272 4
P-F	2590-972-2637	SPACER,SLEEVE: VALVE, STOP-CHECK 10899301 (19207)	EA	2	*	*	*	*	4 8 272 5
P-F	2990-808-6905	VALVE STOP-CHECK: POWER DIVIDER 11640318 (19207)	EA	1	*	*	*	*	4 8 272 6
P-F	4730-278-4822	ELBOW:VALVE STOP-CHECK 444042 (24617)	EA	1	*	*	*	*	4 5 272 7
P-F	5310-959-7600	NUT,SELF-LOCKING: MS51922-5 (96906)	EA	2	*	*	*	*	6 10 272 8
P-F	4710-177-8376	TUBE ASSEMBLY METAL: 10876540 (19207)	EA	1	*	*	*	*	6 10 272 9
P-F	4730-289-1254	ADAPTER STRAIGHT PIPE TO TUBE: 137407 (24167)	EA	1	*	*	*	*	4 8 272 10
X1		WASHER: 10876542 (19207)		1					272 11

2-340

Current part is item (6) on diagram. Available at www.oshkoshequipment.com



AT 47366

Figure 272. Power divider winch governor and related parts.

Oshkosh
Equipment Sales